

# MineScape 2021 Update 10

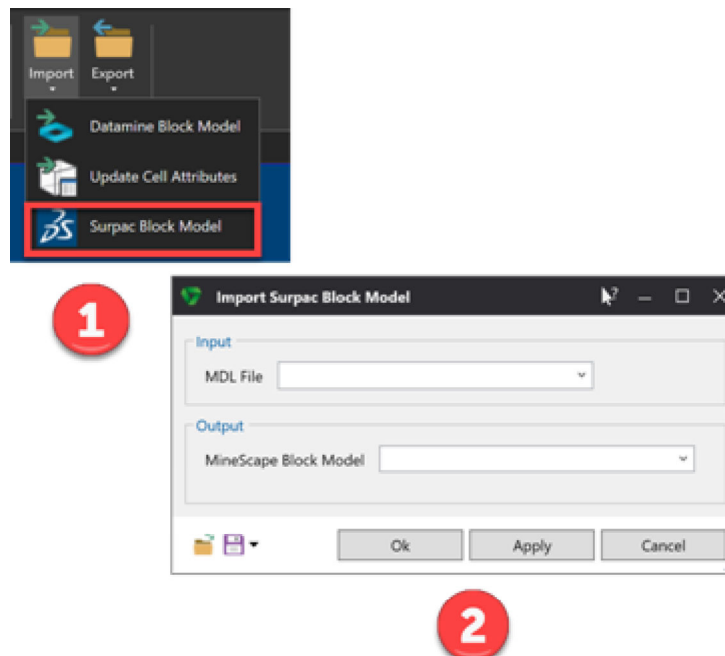
The following section lists the new functionality, features and defect corrections delivered with MineScape 2021 Update 10.

## What's New

### MineScape Geology Enhancements

#### Support Added for Surpac Block Model Imports

A new form has been added to support the Surpac block model import function with MineScape. This new form can be accessed from the **Block Model** application by clicking on the **Output** tab and selecting the **Surpac MDL Block Model** option under the **Data Exchange** group.



*New Surpac Block Model Import Option*

#### New Trace Types Added to GDB for Enhanced Data Visualisation

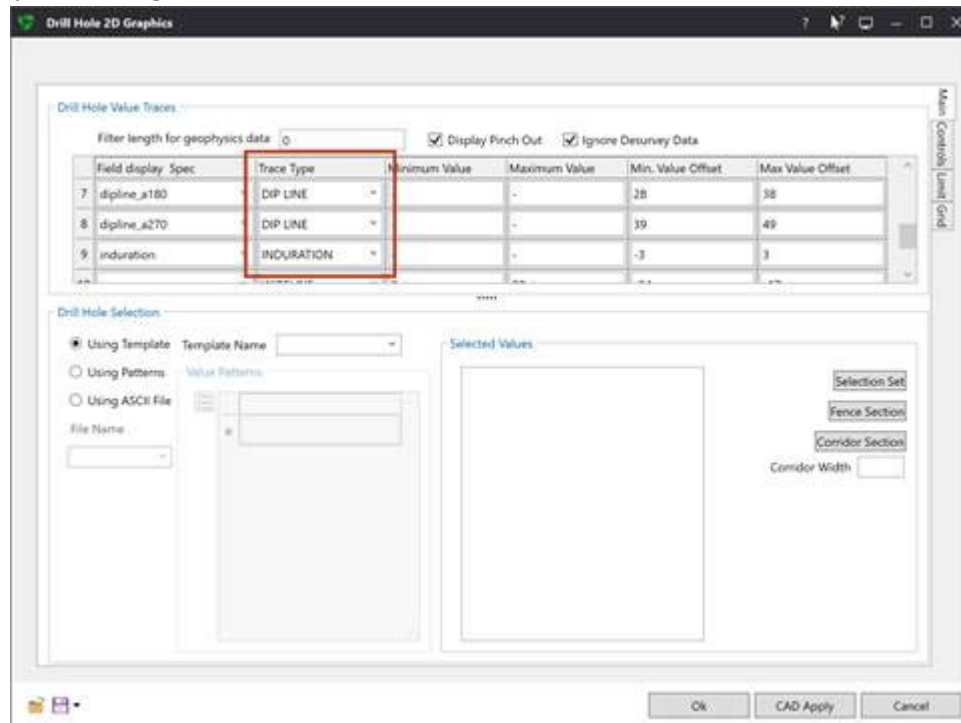
The latest enhancement in MineScape GDB allows users to efficiently store and visualise dip line and induration drill hole information for cross-section interpretations, across both **2D** and **3D** graphics displays.

The **DIP LINE** trace type utilises the dip angle and azimuth fields to render angled dip lines as their apparent dip as viewed from the specified cross-section bearing. Dip line traces employ colour coding based on a custom control field such as the dip quality.

Meanwhile, the **INDURATION** trace type indicates hardness changes with horizontal lines drawn at the initial depth of each induration record. The colouring of these lines is

determined by a custom control field such as a text structure code or numeric induration value.

**NOTE:** When visualising the drill hole data, users can apply a data density filter within the field display specifications to reduce dense data to a manageable size based on a minimum depth change.

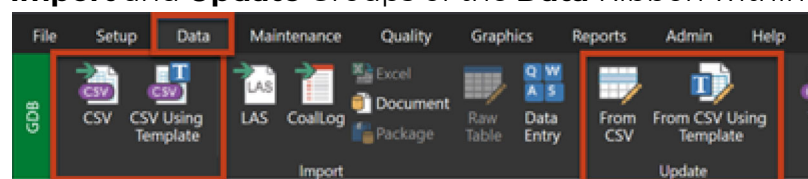


*Dip Line and Induration Trace Type*

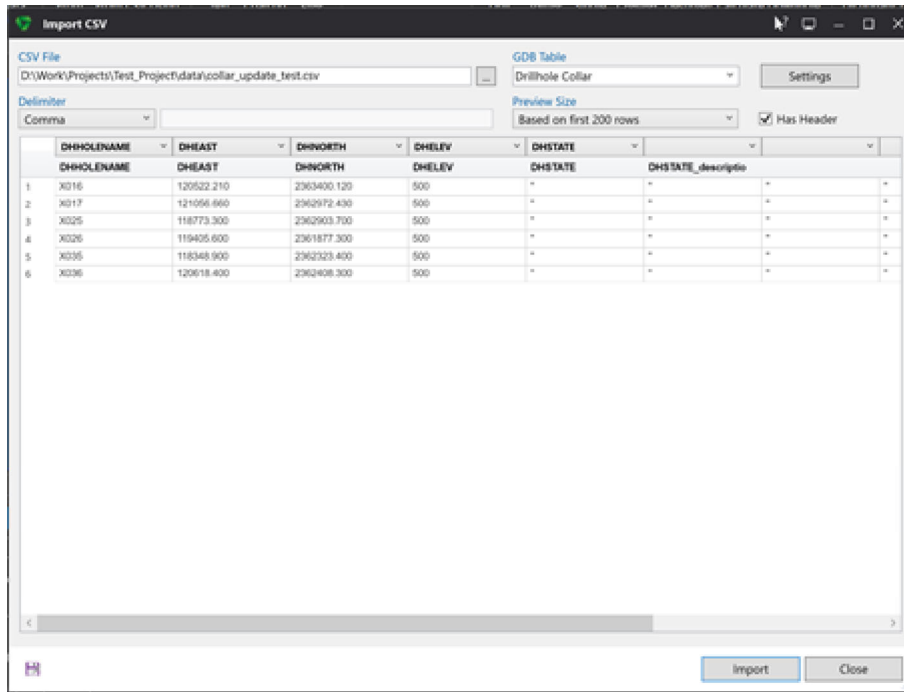
## New Import CSV Options in GDB

Users now have the option to independently import and update CSV files or utilise a predefined data template.

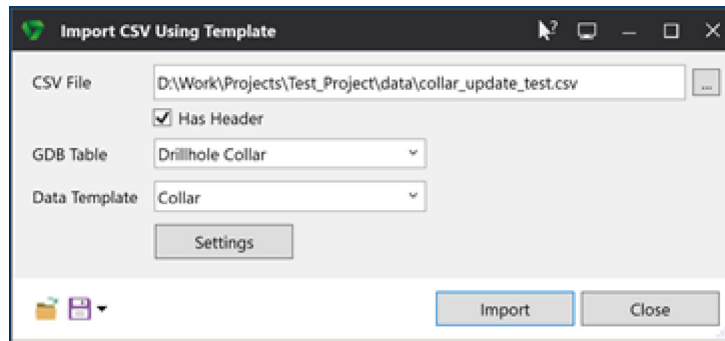
The **CSV**, **CSV Using Template**, **From CSV**, and **From CSV Using Template** Options are added under the **Import** and **Update** Groups of the **Data** Ribbon within the **GDB** App.



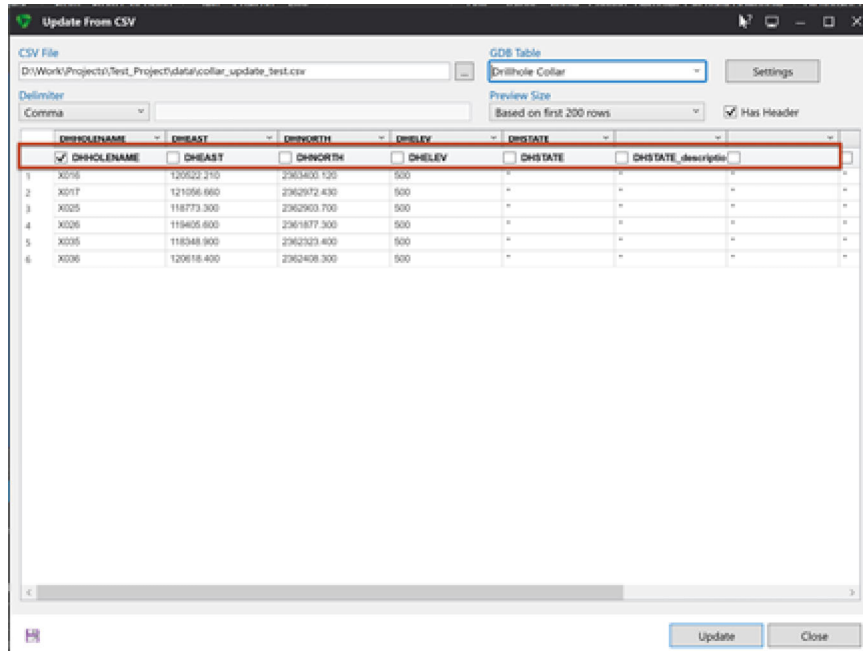
*Data Ribbon*



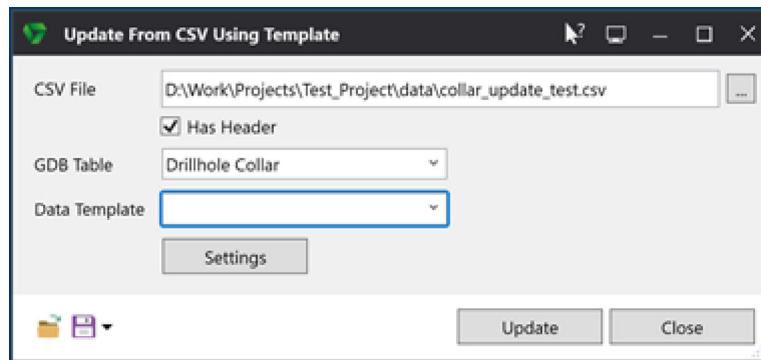
Import CSV Form



Import CSV Using Template Form

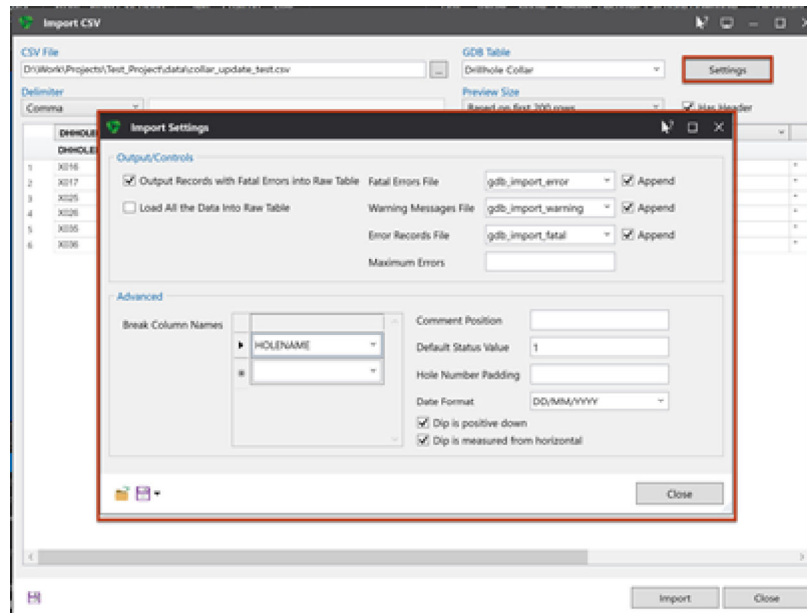


Update CSV Form



*Update from CSV Using Template Form*

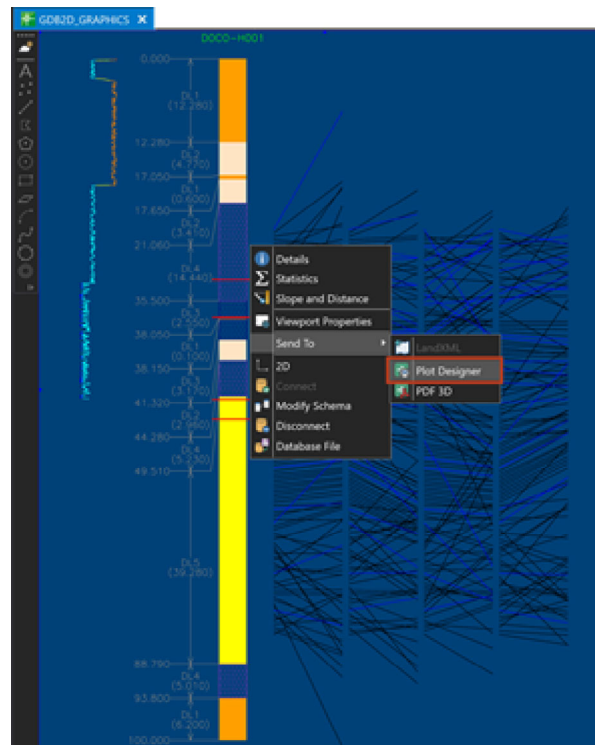
This improvement also allows users to customise the import processes through the **Import Settings** Form.



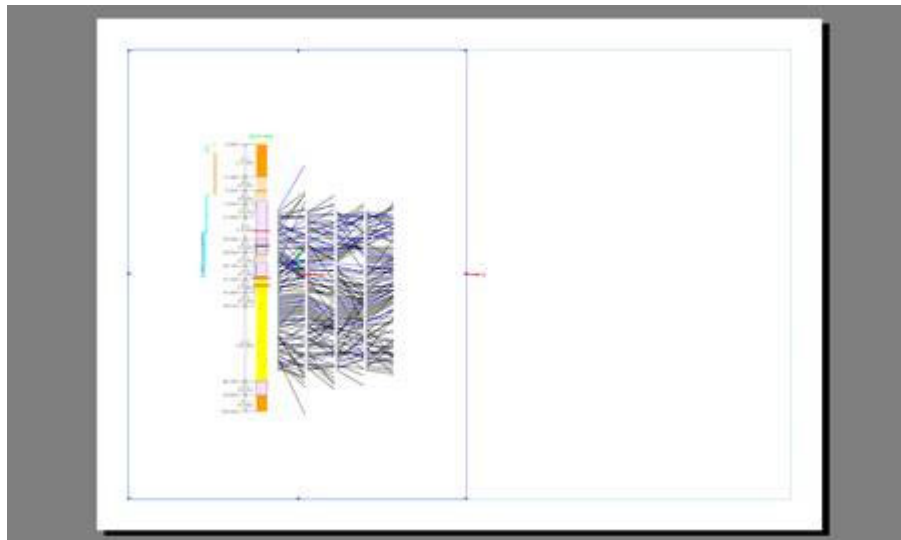
*Import Settings Form*

## Support Added for 2D Graphics Plotting in GDB

Users can now directly send GDB 2D Graphics to the **Plot Designer** app. The new Option is accessible by right-clicking on the 2D Graphics within the **CAD** Window.



*GDB 2D Graphics Right-click Send To Option*



*GDB 2D Graphics Sent to Plot Designer*

## Mesh Enhancement

Mesh files created using MineScape 2023 or later versions can now be read on MineScape 2021 Update 10. However, if any changes are made to the mesh file, it will still be saved in the MineScape 2021 format.

## Defect Fixed

## #41797 Unable to Load Field Display Spec

The **Field Display Spec** field in the **Drill Hole 3D Display** and **Drill Hole 2D Graphics** Forms loaded an inaccurate record-based selection as opposed to the initial settings.